

# Technology's Impact on Active Investing

| Stan Miranda |

**B**ig Data, or the growing universe of information traversing the web, that is available to systematic and fundamental active managers is changing the competitive landscape favouring those firms best able to find and process such data into powerful investment insights. We expect the greatest alpha generation in the future to come from those fundamental managers who are using technology most effectively to evolve toward the hybrid 'human + machine' investor.

Technology is disrupting most industries today. Active investing is no exception. The most important changes that are shaping the industry are: increased processing power enhanced by cloud computing and low cost memory, an explosion in the types and quantum of data and advances in machine learning and artificial intelligence.

The growth of the smart beta industry has already put many 'discretionary' managers out of business and represents just the tip of the iceberg. As 'alternative data' is collected, from social media, web searches, transaction data, satellite imaging and other sensors, and analysed using advanced algorithms, all but the longest horizon discretionary investor are under threat in the next decade.

At the highest level, 'alpha' is derived from one or more of the following three sources: 1) speed advantage, 2) information advantage, or 3) analytical advantage. Technology has already fully disrupted the speed advantages that discretionary managers historically enjoyed and their information and analytical advantage will be increasingly challenged by progressive systematic investors exploiting more data and processing power.

The most vulnerable are opportunistic discretionary managers trading with sub one-year horizons based on quantitative technical information and fundamentals;

as systematic firms exploit superior predictive data to outmanoeuvre humans. The least vulnerable in the near-term are long-horizon deep fundamental research based managers where machine learning has not yet progressed to the point of being able to replace human judgment in assessing and predicting management quality, strategy effectiveness, etc. Machines work on recognised historical patterns, making innovation and anomalies difficult to recognise using automation.

Many, but by no means the majority, of discretionary managers have woken up to the new paradigm and are investing in 'data science' capabilities. Simply hiring 'quants' will do little to enhance alpha-generating capabilities. Scale and organisational rebuilding to fully graft data science capabilities across all investment processes over a number of years is required. This brings with it all of the associated organisational risks of cultural integration having to be carefully managed. Parallels in other disrupted industries (e.g., traditional retailers launching an online offering but not focusing on making it a truly seamless customer experience) suggest that, in order to ensure success, it is critical for the corporate culture to truly embrace the change and devote sufficient resources to it even if it cannibalises some existing lines of business.

Against this rapidly changing investment manager landscape, in the name of protecting client investment performance, Partners Capital is looking to:

1. Avoid the fundamental managers who are most vulnerable to disruption by systematic managers (e.g., those with shorter time frame, liquid trading strategies)
2. Invest with fundamental managers who are using technology most effectively to evolve toward the hybrid 'human + machine' investor

### Technology's Impact on Active Investing

3. Build strategic relationships with leading systematic managers to secure access to future capacity and strategies

#### Technology's Impact on Investing

Twenty years ago, one of the first examples of a machine beating a human occurred when chess champion Gary Kasparov was beaten by IBM's supercomputer, Deep Blue. Since then, we have seen several examples of machines beating humans and the impact of technology has become a very important conversation to have in the context of investing. In 2017 a research team at Partners Capital, led by CEO Stan Miranda, spent six months talking to over 30 systematic (quantitative) managers, a similar number of discretionary (fundamental) managers and various investors and experts to help us answer four critical questions:

1. What are the major technological developments impacting investing?
2. Are systematic managers gaining on fundamental managers?
3. What is the hybrid 'human + machine' model that will win in the future?
4. How are the best fundamental managers turning their understanding of how technology transforms industries into alpha?

Below, we take each question in turn and provide the answers and supporting analysis derived from this research.

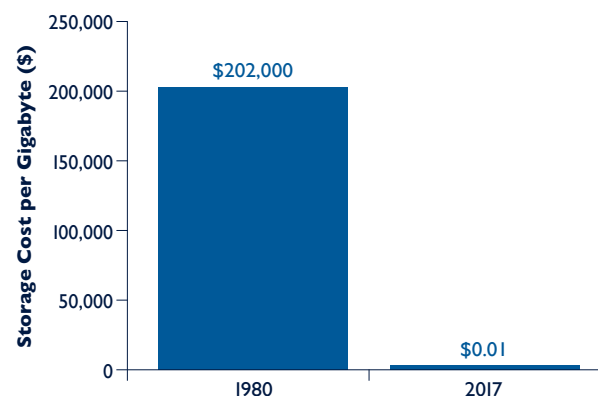
#### Question 1: What are the major technological developments impacting investing?

The technological developments transforming the investment industry are no different from those impacting many other industries today. These are:

1. Growth of data storage capacity and computing power
2. Big Data: explosion of non-financial data
3. Advanced Algorithms: Artificial Intelligence ('AI') / Machine Learning

Moore's law (the observation that the number of transistors in a dense integrated circuit doubles approximately every two years) has carried on for 50 years. In 1980, a gigabyte of storage cost \$202,000 compared to 1 cent today (Figure 1). A gigabyte holds roughly the memory of a TV quality movie. There is a large pipeline of new technologies to prolong Moore's law, including optical communication (i.e., light based communication within chips), neuromorphic computing (i.e., devices modelled on the densely linked bundles of neurons in animal brains) and quantum well transistors to boost electrical charge carriers enabling extra iterations of Moore's Law. The Economist article 'After Moore's Law' provides an excellent summary of the efforts to prolong the life of Moore's Law ([www.economist.com/technology-quarterly/2016-03-12/after-moores-law](http://www.economist.com/technology-quarterly/2016-03-12/after-moores-law)).

**Figure 1: Today's storage costs are a tiny fraction of what they were in 1980**



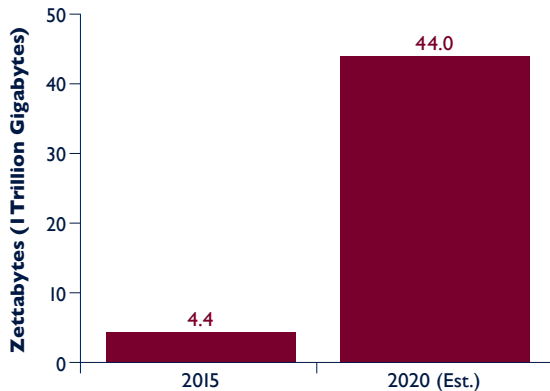
Source: hblok.net/storage. Data collected by John C. McCallum, IDC.

With ever cheaper storage capacity, we can expect exponential growth in its availability and usage. IBM has forecast that the total data storage capacity on the planet will grow to 44 zettabytes in 2020, a tenfold increase over five years (Figure 2). This is enough storage for 33 years of internet traffic, based on the volume of internet traffic in 2016.

## Intellectual Capital

### Technology's Impact on Active Investing

**Figure 2: 2020 storage capacity will be 10 times 2015 capacity**



Source: IBM: 'Bringing Big Data to the enterprise'. Sourced through JP Morgan: Big Data and AI Strategies: Machine Learning and Alternative Data Approach to Investing.

We used to talk about gigabytes of data, and maybe terabytes, however at a recent meeting with systematic hedge fund, Two Sigma, they spoke of the 35 petabytes of data they have stored today, which they expect to grow to be 120 petabytes by 2020. A petabyte is quadrillion bytes or 10 to the 15th power. In analogue terms, 120 petabytes is equal to taking all of the books and studies found in all US academic research libraries and then multiplying that by 60. Worldwide storage capacity is now measured in zettabytes, or 10 to the 21st power, which has gone beyond any analogue equivalent. Table 1 is a useful guide to data storage measurement.

In addition to growth in storage capacity and reduced storage costs, there have also been significant advancements in computing power. In the 1970s, there were a couple of thousand transistors on integrated chips. Today, there are over 10 billion. Supercomputer processing speed has doubled every 1.5 years, with 1 million computations per second in the 1980s and 10 trillion today. Massive computing power is now generally affordable and available to the smallest companies and even individuals through cloud based providers such as Amazon Web Services (AWS).

In the world of active investing, this substantial increase in storage capacity allows for the collection of billions of data points which are directly or indirectly related to companies, and can be analysed to identify patterns in valuations over time. Greater processing power means that more complex algorithms can be run in a timely manner without reaching the limits of that processing power. One systematic investing firm noted that the research processes that took 3 hours in 2002 now take '5 seconds'. This development goes hand-in-hand with the growth of 'big data'.

**Table 1: Data storage measurement definitions: from bytes to zettabytes**

Measure	Bytes	Analog storage equivalent
Bytes	8 Bits	A single character
Kilobytes	1000 Bytes	A very short story
Megabyte	1,000,000 Bytes (million)	A small novel Gigabyte
Gigabyte	1,000,000,000 Bytes	A single TV quality movie
Terabyte	1,000,000,000,000 Bytes (10 <sup>12</sup> or a trillion)	An academic research library Petabyte
Petabyte	1,000,000,000,000,000 Bytes (10 <sup>15</sup> or a quadrillion)	50% of all US academic libraries
Exabyte	1,000,000,000,000,000,000 Bytes (10 <sup>18</sup> or a quintillion)	5 Exabytes = all words ever spoken by human beings
Zettabyte	10 <sup>21</sup> or a sextillion Bytes	1.3 Zettabytes = World's internet 2016

Technology’s Impact on Active Investing

**Big data: explosion of non-financial data**

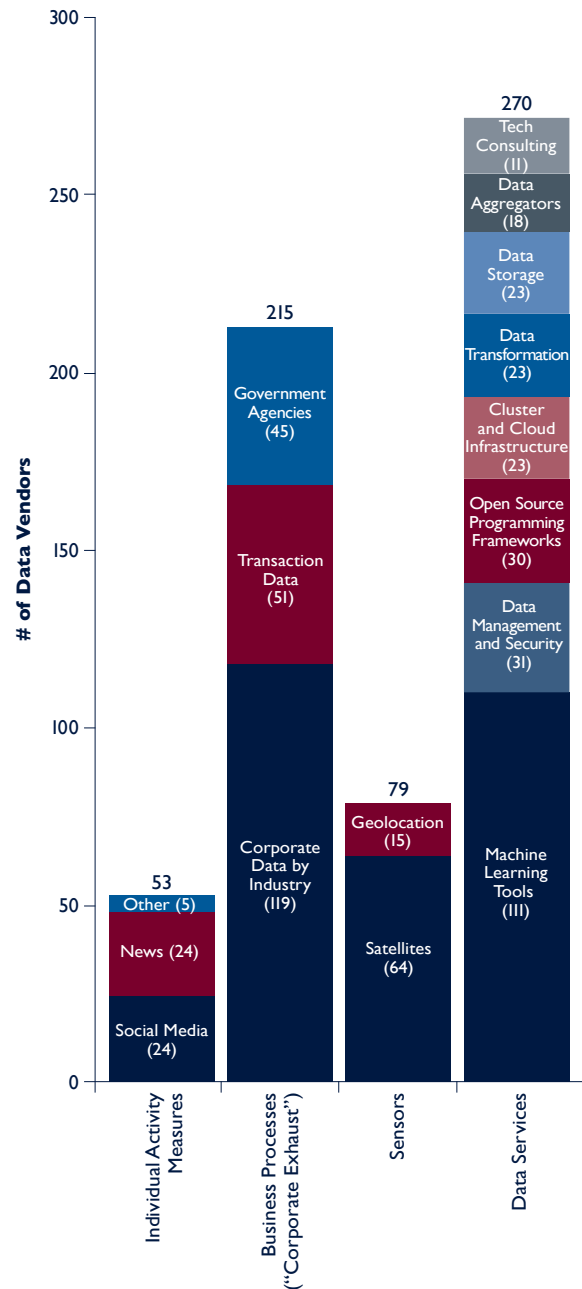
The explosion of non-financial data available to investors today comes from human activities such as credit card transactions and business processes, including corporate internet transactions and sensors sitting in outer space in satellites. We have organised the new non-financial data into three categories:

1. Individual Activity Capture, such as
  - a. Credit card transactions
  - b. Social media sentiment data
  - c. Browser clicks data
  - d. Email receipt data from consumer transactions
2. Business Processes, such as
  - a. Corporate ‘exhaust’ (e.g., procurement transactions)
  - b. Government databases
  - c. Scraping sell-side analyst reports
  - d. Website scraping including news
3. Sensors, such as
  - a. Cell phone GPS location data
  - b. Satellite images
  - c. Shipping data
  - d. Internet of Things (IoT) Sensors

One example of a newly launched data supplier to the investment industry is Orbital Insights (one of the 79 sensors-based data providers shown in Figure 3). Orbital Insights is focused on predicting short-term movements in oil prices based on satellite image based estimates of inventory levels. Oil reserves are often stored in floating tanks around the world, whose lids rise and fall with increasing or decreasing storage levels. With the rising and falling height, the crescent shaped shadows cast by the sun also change shape. By tracking these shape changes for 20,000 tanks around the world, Orbital Insights predicts short-term movement in oil inventory levels and oil prices with remarkable accuracy.

To bring the value of big data to life, Table 2 below provides some actual examples of where active investors have used new sources of data to provide analytical insights about the prospects for different companies.

**Figure 3: JP Morgan’s 2017 research on big data has listed over 600 data providers to investment managers**



Source: JP Morgan, Big Data and AI Strategies (May 2017)

## Intellectual Capital

### Technology's Impact on Active Investing

**Table 2: Examples where big data provided unique investible insights**

Company	Data used and insights gained
<b>CarMax</b> a used vehicle seller and auctioneer	Algorithms were developed to automatically gather data from CarMax's inventory list, which is posted in its entirety online. CarMax does not negotiate on price; when listings are taken off their inventory list, the manager knows on a daily basis what was sold at what price.
<b>Priceline</b> an online travel agent	Data was collected on the number of 1) hotels, 2) bookable rooms and 3) hotel reservations on a daily basis from Priceline's website. Priceline derives most of its revenue by buying the reservation and reselling it to the consumer at an attainable price, therefore this data can be used to predict revenue growth. They are able to track growth in the size of Priceline's platform, which then predicts international gross bookings with just 2% average error on a quarterly basis.
<b>Restoration Hardware</b> a home furnishings retailer	Order volume data was collected by systematically placing orders at monthly intervals and reverse-engineering the patterns of company-provided sequence of order ID numbers. This data can be combined with estimates of average selling price (based on credit card data) to arrive at a revenue forecast.
<b>Starbucks</b> or any retail company with physical presence	Geo location data of customers' cell phones was used to estimate customer traffic at physical store locations. Data is collected via apps that install geo location codes on cell phones with the users' explicit consent.

#### Advanced algorithms: artificial intelligence / machine learning

Artificial Intelligence has many varying definitions. For our purposes, we define it as the development of computer algorithms able to perform multi-step functions that normally require human intelligence such as visual perception and speech recognition. Some subsets of AI include Machine Learning, Natural Language Processing, Deep Learning and Reinforcement Learning. In finance, AI can be used throughout the investment process, from identifying and cleaning databases to leveraging high volumes of data ('Big Data') in order to discover repeatable patterns to predict asset pricing. In active investing, supervised machine learning is the most progressed in predicting asset prices.

Machine learning in investing generally refers to data analysis where the computer builds its own predictive models, as opposed to employing models built by humans, using algorithms that iteratively learn from data. The computer 'learns' and improves the model's predictive capability over time based on the data it has been fed and patterns it recognises without human intervention. This allows computers to find patterns without being explicitly programmed where to look. Machine learning algorithms aim to identify complex and potentially non-linear relationships, such as prediction rules for stock forecasts from a vast amount of data. Because of the massive amounts of data necessary, machine

learning is only valuable with dramatic increases in processing power.

Machine learning is relatively new to active investing and has not proven itself yet to be a source of greater alpha. The biggest hurdle that managers are seeking to overcome is the non-stationarity of the data – that is, unlike the rules of driving or chess for example, the inputs into financial models are constantly changing and evolving. This makes it very difficult to find long-term sustainable patterns, necessitating more complex algorithms. There is a trade-off, however, between the complexity of the algorithms and interpretability of the results. The more complex the processes, the more random the relationship between the variables appears to be.

Large systematic investors such as Renaissance, AQR, Two Sigma and D.E. Shaw have long used complex algorithms in their investment processes and are actively researching ways to continue expanding their use of more advanced techniques, such as machine learning. Many of their founders and senior research team members have their academic and career roots in machine learning research. Their models are increasingly incorporating programs that have the ability to alter algorithms based on the magnitude of observed success or failure in trading from a set of data relationships. All of these firms, however, have commented that they do not feel they are anywhere near fully substituting human judgement with machine

# Intellectual Capital

## Technology's Impact on Active Investing

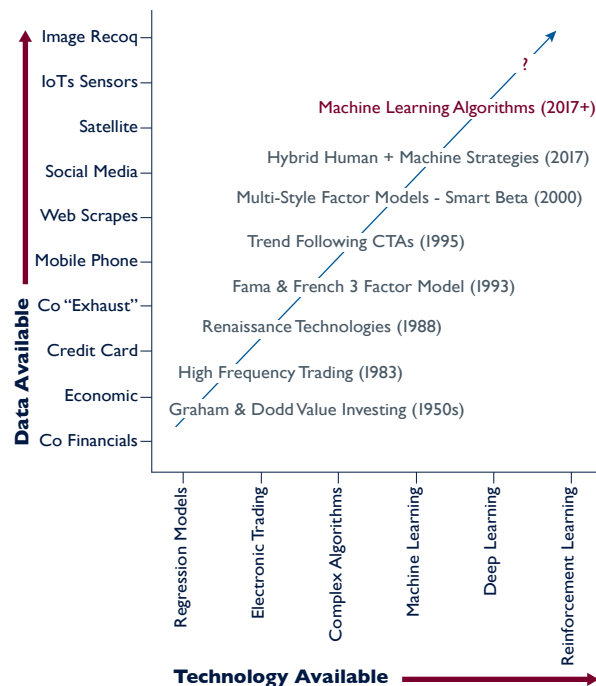
learning/AI. The most commonly cited reason is that they believe that the noise in the financial markets makes it perilous to exclude human inputs from the research and investment process.

One of the largest advocates of machine learning in active investing is WorldQuant. The systematic investment firm, which manages substantial capital for multi-strategy firm Millennium, has leveraged machine learning techniques to develop a library of millions of alpha signals that its portfolio managers can employ alongside human developed alpha signals. They note that the human developed alphas are typically higher quality and have better performance once taken out of testing phases, but the production capacity is limited by headcount (they have over 300 researchers) and human limitations. Machines, on the other hand, can run a billion simulations per month and, using that brute force, can identify undiscovered patterns in data. These patterns can identify price relationships or trends which yield small gains on thousands of individual transactions in short periods of time. Today, over 80% of the alpha signals that World Quant leverages are machine generated. More recently, more dedicated machine learning based strategies have emerged, mostly from hedge funds operating on the West Coast. These include firms like Voleon, whose founders spent the early years of their careers at D.E. Shaw, and then managed capital for SAC Capital. Voleon deploys a strategy centred around machine learning with few investment professionals being part of the team, relying instead on physicists, computer scientists and engineers to build state of the art algorithms. Others have followed Voleon including Sentient (a hedge fund launched by the firm that developed the technology forming the basis for Apple's Siri), Voloridge, and Cerebellum Capital; all are now managing capital for third party investors. Performance has not yet suggested machine learning trading strategies to be superior to more traditional algorithmic trading strategies, whether the latter are incorporating machine learning or not. Importantly, these firms have also discovered a significant pitfall of machine learning strategies when it comes to managing external capital. Because of the complexity of the algorithms it can be impossible to explain unusual performance or why a portfolio looks the way it does. This can make investing in these strategies a non-starter for allocators who want to understand why their funds are performing the way they are.

While processing power and big data are clearly bringing new capability to systematic and fundamental investors, we are still watching for tangible advances from the use of artificial intelligence and machine learning.

That being said, our model for assessing the systematic investment capability of any systematic or fundamental investor is shown in Figure 4, defining that capability along three dimensions which are closely aligned with the three technology trends described above. Systematic investment capability is measured by: 1) data harnessed by the manager (y-axis), 2) technology adopted by the manager (x-axis) and 3) the processing power available to exploit the enlarged data set and technological engine (the 45 degree vector). We illustrate the historical evolution of systematic investing by plotting past systematic investors on this grid.

**Figure 4: Partners Capital model for assessing active manager systematic investment capability**





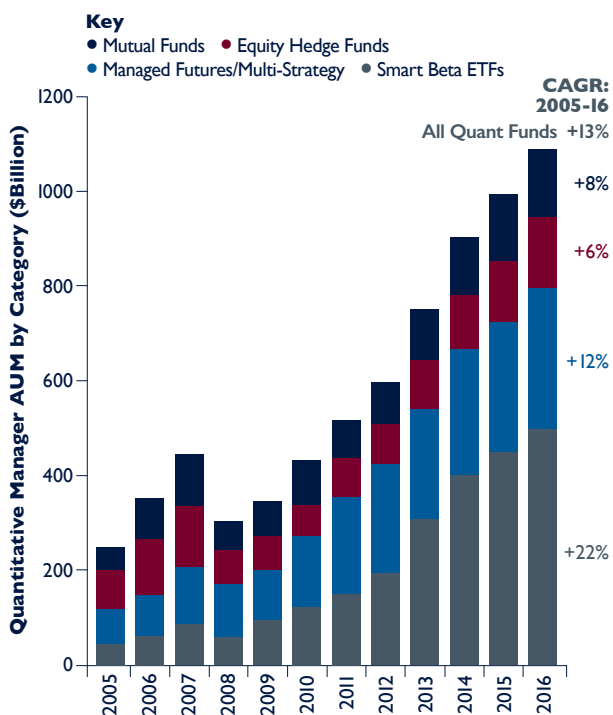
Technology's Impact on Active Investing

This framework is presently being used by our research team in discussions with our existing and new managers to assess the extent to which the manager is evolving relative to their competitors.

**Question 2: Are systematic managers gaining on fundamental managers?**

Assets invested by systematic hedge funds, long only equity managers and ETFs have grown over the last 12 years at a rate of 13% per annum (Figure 5). This compares to approximately 6% for the asset management industry overall. However, much of the gains on fundamental managers have come from so-called smart beta products, which provide investors with low cost exposure to style factors such as value, momentum and quality. Systematic hedge funds have grown at very similar rates to that of the overall hedge fund industry in the last 12 years, at approximately 9% per annum.

**Figure 5: Growth of AUM in systematic strategies**

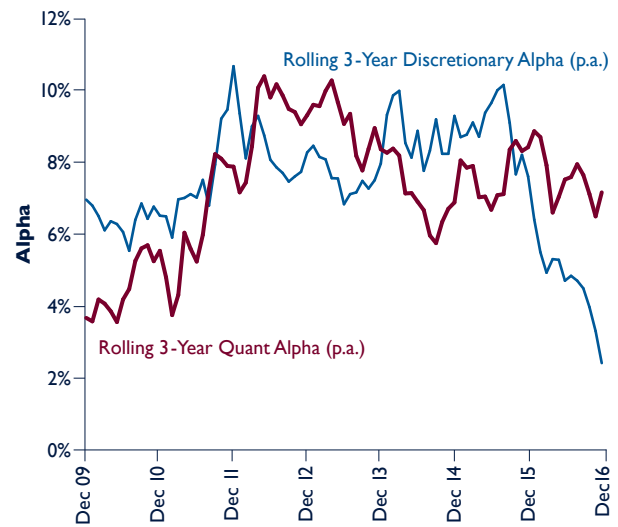


Source: Mutual fund data as per Thomson Reuters Lipper, sourced through Seeking Alpha (author: Tom Roseen). Hedge Fund data as per Barclays: 'Rise of the Machines: Landscape and Recent Developments in Quantitative Hedge Fund Strategies, Products and Managers'. June 2017. This Barclays data is in turn from Barclays, HFR, HFI, Strategic Consulting analysis, Novus. Smart Beta ETF data is from Morningstar.

**Performance of systematic vs. fundamental strategies.**

There does not appear to be any clear evidence that systematic managers are beating discretionary managers across various strategies today if we compare their average three year rolling alpha. Recent history shows systematic equity hedge funds catching up with fundamental strategies with little differentiation in performance today. However, if we focus on the best systematic managers and look at their rolling three year alpha against the best fundamental equity managers (based on the current line-up of 10 Partners Capital approved systematic managers versus our 20 approved fundamental equity managers), the systematic managers have recently pulled ahead averaging around 700bps of net alpha versus 300bps for fundamental managers. We note, however, this reflects a precipitous drop in fundamental manager alpha as a result of the Q1 2016 recession scare and related sell-off of growth and momentum equities, as can be seen in Figure 6 below.

**Figure 6: Historical Alpha of Quant vs. Discretionary Managers (among Partners Capital approved managers)**

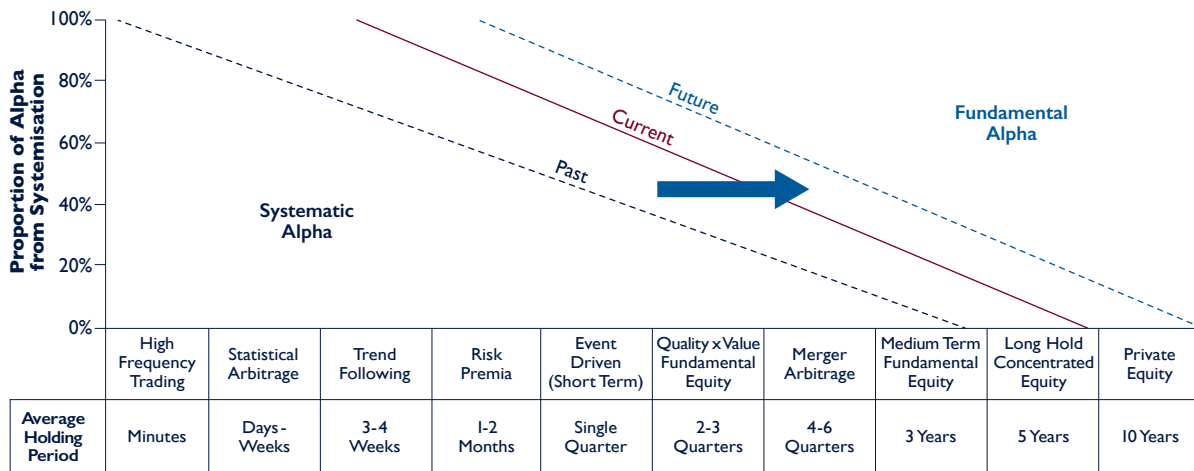


Notes: 1. Quant alpha represents equal-weighted outperformance of the systematic funds over MSCI World. In case of newly launched funds, the back-test has been used. 2. Discretionary alpha represents equal-weighted beta-adjusted outperformance of the discretionary equity managers over their respective benchmark.

Source: Partners Capital

Technology's Impact on Active Investing

Figure 7: Conceptual framework for the systematic vs. fundamental battle



Source: Partners Capital

As we extrapolate our findings more generally on systematic versus fundamental investing into the future, we believe that systematic capability will take share of alpha from fundamental capability increasingly over time. Such gains will take place mostly where fundamental investors have relatively short investment time frames as this is where the data is more readily available and analysis more systemitisable. For example, fundamental equity managers focused on predicting quarterly earnings surprises should see systematic managers increasingly doing a better job of this. Similarly, winning merger arbitrage strategies should be more systematic in their approach. Figures 7 illustrates a conceptual framework for how we think this will play out over time.

Towards the left on the x-axis you have the shortest time frame hedge fund strategies such as high frequency trading (think Michael Lewis' Flash Boys) and statistical arbitrage. At this short end of the investment time horizon spectrum, we see quantitative managers owning the majority of the alpha today. Towards the right you have longer term strategies such as activist equity investing in concentrated long hold equity portfolios. Here fundamental managers dominate the share of alpha versus systematic managers. The battle ground being fought over between systematic and fundamental managers is occurring in the strategies with one month to one year time horizons including event driven strategies such as merger arbitrage. As systematic managers continue to add new data and processing power more rapidly than fundamental managers, we expect to see quant managers gradually taking share of alpha from the fundamental managers

in this middle ground, where it is easier to automate insights around quarterly earnings estimates and similar events.

In this conceptual model, we see systematic managers gradually working their way from left to right in garnering alpha from fundamental managers in the coming years. This all assumes that fundamental managers will not fight back with their own systematic add-on models. But what makes us feel more confident that the quants will win in the middle time horizon battlefield is their sheer size and resources. Figure 8 below shows the scale of assets managed by the largest quant firms. Add to this the high fees earned, one can estimate the amount of resources likely to continue to be invested in growing their technological capabilities.

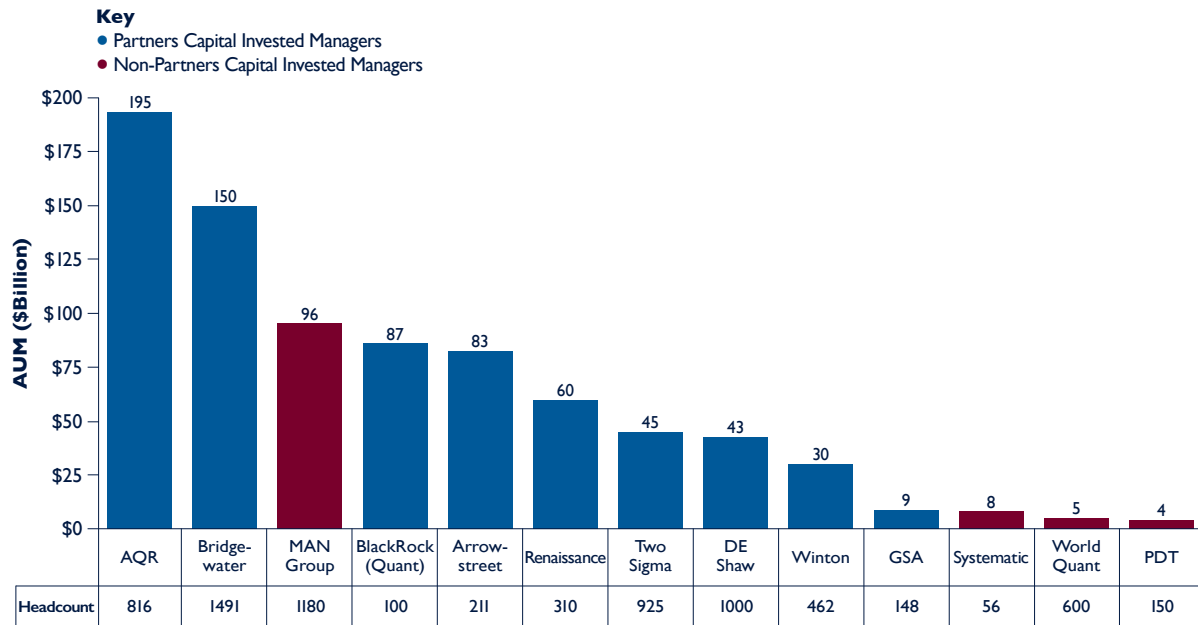
A good model for deciphering which strategies are most vulnerable versus most defensible is shown in Table 3. While systematic firms will make significant headways as we describe above, humans will still have the advantage in longer horizon concentrated strategies. However, most discretionary hedge funds still expect a blend of systematic and fundamental approaches will generate the highest levels of alpha going forward in the middle time horizon strategies.



## Intellectual Capital

### Technology's Impact on Active Investing

**Figure 8: The 'technology arms race' is likely to be won by the quant firms**



Note: Data from relevant funds where available, with additional sources including the SEC (Bridgewater, Arrowstreet, GSA, Systematica), Citywire (MAN Group) and Business Wire (WorldQuant).  
Source: Partners Capital

**Table 3: Humans still have the advantage in longer horizon concentrated strategies**

Areas of Comparative Advantage		
Systematic Advantage	↔	Human Advantage
Shorter	Investment Horizon	Longer
Liquid	Liquidity of Underlying	Illiquid
Diversified	Portfolio construction	Concentrated
Large	Universe Size	Small
Broad	Area of Focus	Narrow
<ul style="list-style-type: none"> <li>• Diversified Long Only Equity</li> <li>• Generalist Long/Short Equity</li> <li>• Equity Market Neutral</li> <li>• Macro</li> </ul>	Most suited strategies	<ul style="list-style-type: none"> <li>• Distressed credit</li> <li>• Concentrated ELS</li> <li>• Activist</li> <li>• Private equity</li> <li>• Direct lending</li> </ul>

Technology’s Impact on Active Investing

**Question 3: What is the hybrid ‘human + machine’ model that will win in the future?**

Quite simply, the most successful hybrid human + machine fundamental manager of the future will be one which most successfully adopts the best practices of some of the most effective systematic managers across all four elements of the investment process. Technology in fundamental houses can be used in security screening, company research, portfolio construction, risk management, internal performance evaluation and trading and execution. We describe these in the Table 4 below in more detail.

Fundamental managers who graft systematic capabilities and employ integrated fundamental analysts and data science teams are likely to be the winners in the battle ground area outlined above.

Figure 9 below represents an organisational chart of the hybrid model of the future where fundamental and quantitative research teams work side by side, supported by a strong central data sciences function. Few firms today come close to deploying this model, given the significant recruiting cost and cultural integration challenges; however, steps in this direction should be rewarded over time with superior returns.

**Question 4: How are the best fundamental managers turning their understanding of how technology transforms industries into alpha?**

While innovation is not new to businesses and industries, in our opinion, the pace and magnitude of innovation is greater than it has ever been in history. There is barely a single industry that is not being affected by technological change and innovation more broadly, as shown in Table 5.

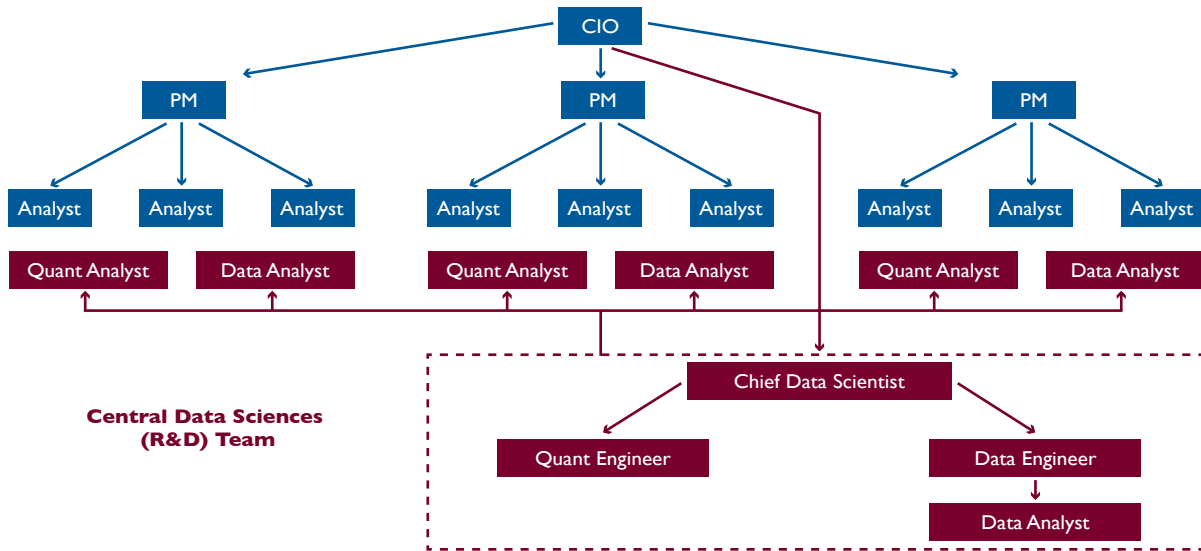
**Table 4: The hybrid ‘human + machine’ fundamental equity manager will adopt the systematic processes alongside existing fundamental investment processes**

Security Screening (idea generation)	Company Research	Portfolio and Risk Management	Trading and Execution
<ul style="list-style-type: none"> <li>Algorithms used to systematically screen opportunities particularly on the short side (e.g., scanning for the use of certain words in sell-side analyst reports which data scientists have found to be correlated with good shorts)</li> <li>More companies screened with more sophisticated algorithms</li> <li>More data inputs including traditional (e.g., cash flows, profitability) and alternative (e.g., satellite data, credit card data)</li> <li>More internal systems to share ideas across teams</li> </ul>	<ul style="list-style-type: none"> <li>Integrated approach across fundamental research and data science teams</li> <li>Dedicated data sourcing activity covering new sources</li> <li>More new data inputs to fundamental analysis</li> <li>Platform and tools to run custom data analysis to support or challenge investment case</li> <li>Unique information collected over many ears turned into quant data inputs (e.g., management quality)</li> <li>Pure data model based valuation as a cross-check on fundamental valuation</li> </ul>	<ul style="list-style-type: none"> <li>Complex portfolio risk attribution and scenario modelling</li> <li>Fully automated position sizing and portfolio optimisation based on upside/downside, stock correlations and exposures (beta, sector, style, geography and liquidity)</li> <li>More accurate measures of true idiosyncratic alpha (i.e., stripping out factor effects)</li> <li>PM/Trader capital allocation models tied to alpha size and volatility</li> <li>PM performance analysis (vs. performance of all analyst recs), with compensation based on alpha (rather than pure P&amp;L) relative systematic quantification of opportunity set and exposures</li> </ul>	<ul style="list-style-type: none"> <li>Automated trading based on results of optimisation process</li> <li>Connection to multiple platforms to ensure best execution</li> <li>Short term event driven trading models to size positions (e.g., trading around corporate earnings events)</li> </ul>

## Intellectual Capital

### Technology's Impact on Active Investing

**Figure 9: Technology-enhanced discretionary manager organisation**



Source: Partners Capital

**Table 5: We are currently seeing unprecedented levels of disruption across all industries**

Disruptor	Disrupted
Driverless Cars	Auto Industry
Shared Cars (Uber)	Taxi and Auto Industry
Electric Cars / battery technology	Auto and Oil Industry
Power co-generation and battery technology	Power utilities
Amazon	Virtually all non-service retail
Shared Accommodation (Airbnb)	Hotels
Specialist retail medical clinics	Doctor offices and hospitals
Direct-in-home video streaming (Netflix)	Hollywood
Music streaming (Spotify)	Music industry
Search and On-line news	Print media industry
Alternative Energy 3D Printing and Industrial	Fossil Fuels
Automation (robots)	Industrial manufacturers
Biotech	Big Pharma, Life insurance
Sensors	Transportation
Peer-to-peer lending	Credit cards, banking
Smartphones	Telecom and Cable providers

## Intellectual Capital

### Technology's Impact on Active Investing

As a result of the pace of change, we believe that our fundamental active managers need to invest in an entirely new lens through which to analyse companies and industries to fully understand how technology and innovation is redefining the universe of winners and losers. Over the course of 2017, during our routine meetings with our approved asset managers and prospective new managers, we discussed what they are doing differently to fully understand how industries and companies are being disrupted. A few of our managers have evolved to build this understanding. The best tended to be in the private equity world where they have long engaged external experts on whatever learning they felt they did not have in-house to properly assess their new investments, but also to add value to them after acquisition. However, in our opinion, many of the most talented active fundamental investors have not gained a level of insight to the point where it constitutes a competitive advantage in their ongoing search for alpha.

What would we expect to have heard from our managers? We would have expected to hear that they do have a new lens of sorts and that lens is built by leveraging industry experts who have the deepest insight into how specific technologies and other innovations are changing industry boundaries and sources of competitive advantage. This will enable them to see in advance where new competitors are coming, be they from sectors far afield or from newly born industries (e.g., the auto and taxi industries being disrupted by ride-sharing companies such as Uber). They will see winning business models are changing as key performance drivers change. They will be looking for companies who are distributing what was their central IT function to create deep technological capabilities in all corners of the organisation.

They will be looking for changing organisational structures, where departmental silos are being torn down, decentralised and redefined to enhance cross organisation coordination. They will see that the most productive company culture looking forward will have a greater appetite for taking risk and will be the first to abandon traditional hierarchical decision-making. The insightful fundamental investors will be able to assess where different CEO's and C-Suites have more or less capability to evolve their companies. They will view almost every company as a 'technology company,' even in the most service oriented and low-tech of industries. This is the new

lens we are working with our managers to appreciate and embrace.

But we are not waiting for our incumbent managers to transform their analytical approaches where we feel that is not in the cards. We have already found and invested in new managers who are explicitly set up to exploit their insights into disruption across industries. One recent example is our investment in the Sequoia Global Equities Fund, based on the West Coast, where a relatively small dedicated public equity investing team has access to 96 Sequoia investment professionals globally who can glean insights from investments in over 800+ Sequoia venture capital backed tech companies.

We expect to continue our push in 2018 into our investment theme of exploiting technological disruption through our incumbent managers who are clearly pushing their capabilities forward in this area and into new managers demonstrating superior alpha delivery through their insights.

#### Implications for Partners Capital in managing your portfolios

Summarising our conclusions on the topic of how technology is impacting active investing, we feel the following points are the most critical for our clients to take away:

- All fundamental asset managers must be certain that they have the capabilities internally or externally to understand how industries and companies are being affected by technological innovation.
- Many strategies will not be materially affected by technology in the near or medium term, including those with very long time horizons and with relatively concentrated portfolio holdings. Private equity, distressed investing and long hold activist public equities are examples of those least affected.
- Avoid the fundamental managers who are most vulnerable to systematic managers – those with shorter time frame, liquid trading strategies.
- Back fundamental managers who are using technology most effectively in evolving towards the hybrid 'human + machine' investor.

## Intellectual Capital

### Technology's Impact on Active Investing

- Build strategic relationships with leading systematic managers to secure access to future capacity and strategies.
- Finally, Partners Capital also needs to become a 'technology company' in its own use of data and analysis of client portfolios and asset managers. We believe that we are already leading our Outsourced Investment Office competitors and are making significant further investment to this end.

## Intellectual Capital

### Firm Profile

Partners Capital is a leading Outsourced Investment Office located in London, Boston, New York City, San Francisco, Paris, Singapore and Hong Kong serving investment professionals, endowments, foundations, pensions and high net-worth families globally. We provide wholly independent advice on asset allocation and access to what we believe to be best-of-breed asset managers across all asset classes and geographic markets. This access is strongly enhanced by the quality of our community of shareholders and clients, most of whom are veteran investors themselves in specialist sectors around the world.

The firm was founded in 2001 by investment professionals seeking an independent and conflict free adviser to provide portfolio construction advice and rigorous analysis of investment opportunities. From its initial focus as the “money managers to the money managers” with a base of 70 clients, Partners Capital has grown to become an adviser to endowments and foundations as well as prominent family offices and successful entrepreneurs across the U.S., U.K., Europe and Asia. Endowments have become a large proportion of the institutional client base, which now includes Oxford and Cambridge Colleges, and many of the most highly respected museums and charitable foundations located around the world.

Among Partners Capital services are bespoke outsourced investment solutions for endowments, foundations and tax-efficient and tax-deferred investment strategies for taxable private clients. Partners Capital predominantly advises on entire portfolios but also specialty strategies, such as Private Equity or Private Debt strategies.

Partners Capital deploys an investment philosophy that embraces many of the powerful diversification benefits of the “endowment model” of investing. However we apply a more dynamic approach to asset allocation, which seeks to clearly delineate between performance derived from market factors as opposed to the skill of individual managers.

Today, with over \$26 billion of assets under management, Partners Capital’s clients comprise an equal mix of private individuals and institutional clients. Many of our clients are among the most sophisticated investors in the world, with a sound understanding of investment principles and experience across multiple asset classes.

Partners Capital LLP is authorized and regulated by the Financial Conduct Authority in the United Kingdom; Partners Capital Investment Group LLP is regulated by the Securities and Exchange Commission and is a member of the National Futures Administration in the United States; Partners Capital Asia Limited is licensed by the Securities and Futures Commission in Hong Kong; Partners Capital Investment Group (Asia) Pte Ltd is regulated by the Monetary Authority of Singapore as a holder of a Capital Markets Services licence for Fund Management under the Securities and Futures Act and as an exempt financial adviser; and Partners Capital Europe SAS is authorized and regulated by the Autorité des Marchés Financiers in France.

Further information can be found on our website:  
**[www.partners-cap.com](http://www.partners-cap.com)**

#### Europe

5 Young Street  
London W8 5EH  
England  
Tel: +44 (0)20 7938 5200

28 Cours Albert 1er  
75008, Paris  
France  
Tel: +33 (0)1 7038 1054

#### North America

Federal Reserve Plaza  
600 Atlantic Avenue  
30th Floor  
Boston, MA 02210  
Tel: +1 617 292 2570

1330 Avenue of the Americas  
22nd Floor  
New York, NY 10019  
Tel: +1 212 951 1288

345 California Street  
Suite 600  
7th Floor – Office #59  
San Francisco, CA 94104  
Tel: +1 628 204 3670

#### Asia

50 Raffles Place  
Level 34 - 03A  
Singapore Land Tower  
Singapore 048623  
Tel: +65 6645 3733

Level 16  
The Hong Kong Club Building  
3A Chater Road  
Central, Hong Kong  
Tel: +852 2297 2467



# Intellectual Capital

## DISCLAIMER

Copyright © 2019, Partners Capital

This document is being provided to customers and other parties on the condition that it will not form a primary basis for any investment decision by or on behalf of such customers or parties. This document and any related documentation provided herewith is given on a confidential basis.

This document is not intended for public use or distribution. It is the responsibility of every person reading this document to satisfy himself or herself as to the full observance of any laws of any relevant jurisdiction applicable to such person, including obtaining any governmental or other consent which may be required or observing any other formality which needs to be observed in such jurisdiction. This document is not an offer to sell or the solicitation of an offer to buy any security.

The source for all figures included in this document is Partners Capital unless stated otherwise. While all the information prepared in this document is believed to be accurate, Partners Capital may have relied on information obtained from third parties and makes no warranty as to the completeness or accuracy of information obtained from such third parties, nor can it accept responsibility for errors of such third parties, appearing in this document. The information contained herein has neither been reviewed nor approved by any referenced funds or investment managers.

Opinions expressed are our current opinions as of the date appearing on this document only. We do not undertake to update the information discussed in this document. We and our affiliates, partners, officers, directors, managing directors, and employees, including persons involved in the preparation or issuance of this material may, from time to time, have long or short positions in, and buy and sell, the securities, or derivatives thereof, of any companies or issuers mentioned herein.

This document contains hypothetical or simulated performance results, including for the Equity/Bond index, which have certain inherent limitations. Unlike an actual performance record, simulated results do not represent actual trading. Also, since the trades have not actually been executed, the results may have under- or over-compensated for the impact, if any, of certain market factors, such as lack of liquidity. Simulated trading programs in general are also subject to the fact that they are designed with the benefit of hindsight. No representation is being made that any client will or is likely to achieve profits or losses similar to those shown. These results are simulated and may be presented gross or net of management fees.

This document may include indications of past performance of investments or asset classes. Past performance is not a reliable indicator and is no guarantee of future results. Investment returns will fluctuate with market conditions and every investment has the potential for loss as well as profit. The value of investments may fall as well as rise and investors may not get back the amount invested.

Certain information presented herein constitutes “forward-looking statements” which can be identified by the use of forward-looking terminology such as “may,” “will,” “should,” “expect,” “anticipate,” “project,” “continue” or “believe” or the negatives thereof or other variations thereon or comparable terminology. Any projections, market outlooks or estimates in this document are forward-looking statements and are based upon certain assumptions. Due to various risks and uncertainties, actual market events, opportunities or results or strategies may differ materially from those reflected in or contemplated by such forward-looking statements and any such projections, outlooks or assumptions should not be construed to be indicative of the actual events which will occur.

Certain transactions, including those involving futures, options, and high yield securities, give rise to substantial risk and are not suitable for all investors. The investments described herein are speculative, involve significant risk and are suitable only for investors of substantial net worth who are willing and have the financial capacity to purchase a high risk investment which may not provide any immediate cash return and may result in the loss of all or a substantial part of their investment. An investor should be able to bear the complete loss in connection with any investment.

Certain aspects of the investment strategies described in this document may from time to time include commodity interests as defined under applicable law. Pursuant to an exemption from the U.S. Commodity Futures Trading Commission (CFTC) in connection with accounts of qualified eligible clients, this document is not required to be, and has not been filed with the CFTC. The CFTC does not pass upon the merits of participating in a trading program or upon the adequacy or accuracy of commodity trading advisor disclosure. Consequently, the CFTC has not reviewed or approved this trading program or this document.

Partners Capital refers to the Partners Capital group of entities comprising: (i) Partners Capital Investment Group, LLP, registered as an investment adviser with the Securities and Exchange Commission (“SEC”), as a commodity trading adviser with the Commodity Futures Trading Commission (“CFTC”) and is a member of the National Futures Association (“NFA”) (ii) Partners Capital LLP (FRN: 475743), authorised and regulated in the United Kingdom by the Financial Conduct Authority (“FCA”) and (iii) Partners Capital Asia Limited (CER:AXB644), licensed by the Securities and Futures Commission (“SFC”) in Hong Kong (iv) Partners Capital Investment Group (Asia) Pte Ltd regulated by the Monetary Authority of Singapore (MAS) as a holder of a Capital Markets Services license for Fund Management under the Securities and Futures Act and as an exempt financial adviser and Partners Capital Europe S.A.S is licensed and regulated by the Autorité des Marchés Financiers in France.